

www.ApacheOwners.com



Ramada and Mesa Set-up Instructions

APACHE®



1



2



3



4



5

(1) Insert wheel in jack sleeve, remove back locking pin to release tongue jack from storage position, and (2) lock jack in place from underneath with same locking pin. (3) Unlock coupler from hitch, detach safety chains and electrical hook-up. With front of trailer (tongue end) slightly below level (4) release rear leveling legs, (5) lock in down position and (6) extend to ground. Now jack front of trailer slightly above level and lock down front legs. Then lower tongue jack until trailer is resting level on all 4 body legs. (7) To raise a corner further, insert jack handle in notch of that leg and lift in jacking fashion to desired height. To release, lift slightly with handle and depress locking latch (#7 insert) with thumb and jack down. (8) Unlock and free all road cover latches and (9) store flat against body or they will interfere with the beds as they slide out. (10) Lift each end of cover so that the top rests above the beds.



6



7



8



9



10



11



12



13



14

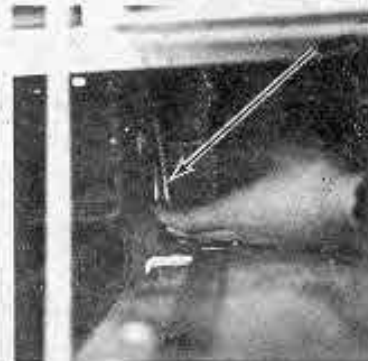


15

(11) Insert crank handle in one of the rear corner receptacles (side opposite door opening) and crank out beds*. (12) Lower all 4 bed support legs and (13) hold each down with your foot as you adjust bed to level with trailer body. (14) Raise both bed bows and drop canvas to sides. (15) Release panel door, lower and (16) step inside. (17) Step locks in place automatically, to release, just hold locking bar back and raise step. (18) Bring all wall canvas around (start with short side at right of door opening) and (19) insert hard backed edge of the canvas into the track along the lower inside edge of the road cover. Zip the two back wall halves together. (20) Release bottom of screen door (over doorway) and guide door into opening from inside so that



16



17



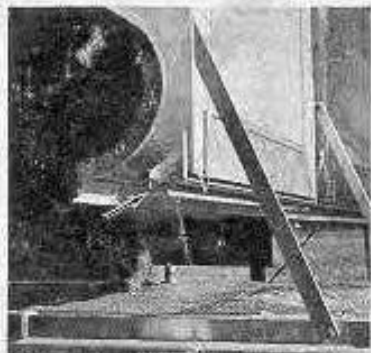
18



19



20



21



22



23



24

(21) door frame rests on threshold step. (22) Zip side canvas to door frame. (23) Hook canvas aprons together under each bed corner with shock cords. Pass cords around retainer buttons to maintain tension. (24) Snap tent, where fasteners are provided, to aluminum rail along top of trailer body. Use an upward rolling motion to detach snaps. Do not yank on canvas. To strike unit, follow these instructions in reverse.

***Don't Force It.** If for any reason the beds will not crank all the way in or out, the following steps should be followed. 1. Check inside trailer for any physical obstruction and correct, i.e., dinette table still up, range lid up, cushions not properly stored, etc. 2 Check outside to be certain all bed legs are properly stored under beds and that road cover locks are flush against trailer body.



1



2



3



4

(1) The dinette table (optional for Mesa) consists of two pieces hinged together and must be stored for traveling with the short leaf resting on the floor and extended towards the rear of trailer. The other portion of the table rests on the narrow ledges along front of the dinette seats as illustrated. (2) To make into a small, space-saving end table, hook the extension, that extends along edge of table, over bed rail, and (3) guide main portion of the table through the slots in each of the seat ledges and onto the floor pad below. (4) Extend entire table horizontally and lower support leg for normal use. For easy access to bed area, just slide table to one side.